



Welcome back to ZIM eNews!

Michael Cowpland, President and CEO

We are very excited to re-launch ZIM eNews - a monthly publication dedicated to the global community of ZIM users and developers.

ZIM eNews is all about sharing information and developments at ZIM. In our New Products section you'll learn about product updates as well as new products being readied for launch. We'll also share useful tricks for ZIM Developers in our Technical Tips section and, for those months when we just have too much to tell you, you might even receive a bonus issue!

We have a lot to share with you in the coming months and welcome any feedback from our reader.

Enjoy the first issue ... and welcome back!

Product News

New TUI and GUI painter

ZIM introduces new and modern TUI and GUI painter for ZIM 7.11 and ZIM 8.20

Features include:

New modern design interface

- Graphical interface with Mouse support
- Rapid development of objects on TUI based systems (Linux/Unix)
- Simplified development environment

Centralized development

- Connect to and work with multiple databases from the same painter session

**Check out
our new website**
www.zim.biz

Beta Testers

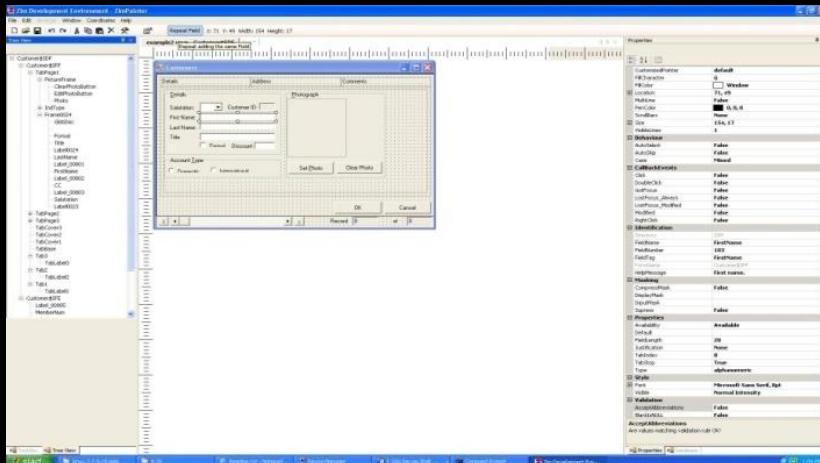
We've opened up 5 spots to beta test the new painter. If you would like to be included in the beta test program please send an email to support@zim.biz Provide you name, organization, email address and phone number.

Platform independent

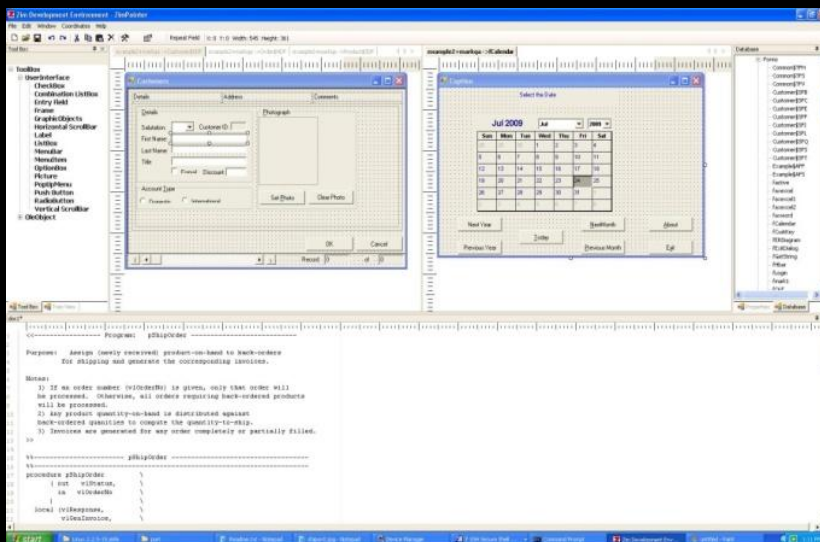
- Develop for any supported Zim platform
- Paint multiple objects simultaneously
- Work on single or multiple objects within the same painter session

Embedded programmers editor

- NEW! ZIM program editor
- Text highlighting



Click [here](#) to see full size image



Technical Tip

Connect to Any SQL Database Server

To connect to a third-party database server install the specific ZIM SAM and use the Zim command "connect".

The syntax is:

connect to [SAM name] using (databasename, applicationname, userid, password, servername, domainname)

Where:

SAM name is the name of the SAM to be used.

Databasename is the name of the database.

Applicationname is the name of the application.

Userid is the userid to be used to connect to the server database.

Password is the password associated with the userid used.

Servername is the name of the server on which the database resides.

Domainname is the name of the domain in which the server resides.

Connecting to Oracle:

You must have the Oracle Client installed

You must have a Local Net Service Name configured (refer to Oracle documentation)

Connect to "oracle" using ("","","username","password", "local net service name", "")

Connecting to SQL Server:

You must have the SQL Server Client installed

Connect to "sqlserv" using ("database", "", "username", "password", "IP or name of the server", "")

Connecting to DB2:

You must have the DB2 Client installed

Create a configuration file for each Database (refer to SAM DB2 Documentation)

Connect to "ibmdb2" using ("application", "", "username", "password", "", "")

Connecting to any using ODBC:

You must have the ODBC Client installed for the specific Database Server

Define a user DSN

Connect to "odbc2m" using ("","","username","password", "DSN name", "")

Technical Tip

Using ZIM Server Access Module (SAM) you can connect to any SQL database. Read the technical tip in this issue or [download](#) a copy of our tutorial on converting to Oracle Server.

New JDBC Driver

New Zim JDBC driver for 7.11 now available. For your free 30 day evaluation contact sales@zim.biz

ZIM Corporation
150 Isabella Street
Suite 150, Ottawa, ON
K1S 1V7 CANADA
Tel: 613 727 1397
Fax: 613 727 9868
www.zim.biz